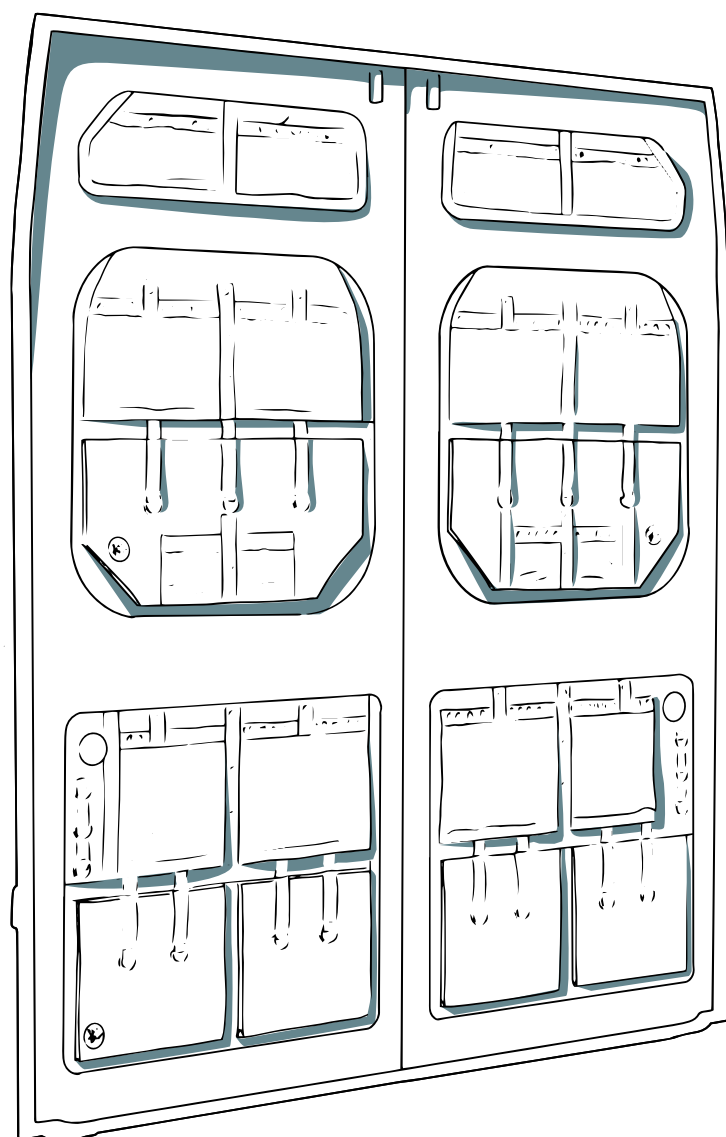

MOON**ORGANIZER**

Installation Guide

Hello! Thank you for choosing our products. We put our hearts into making them, so we're even more delighted that you liked them. In the following instructions, you will find all the information you need.



Live light at
vandermoon.com





Since 1993, Vitberg has been producing medical devices
for rehabilitation, treatment, cosmetology and sports.

Its products are known and appreciated.

Medicine and technology are not our only passion, we
also love exploring the world.

We have translated the experience gained over the years
binto the production of accessories for people like us.

This is how the Van Der Moon brand was born.

Made in Poland, EU.
www.vandermoon.com

Contents

General informations	4
Available versions	5
Tools needed	6
Mounting hardware	6
Prepare the car for installation	7
I. Assembly in the upper and lower recess	8
II. Window recess installation	11
III. Assembly of the Organizer MAX	14

General **information**

Designed for heavy-duty use.

The incredibly durable and surprisingly lightweight Moon Organizer is constructed from 4mm thick hardwood plywood. The front side of the plywood is covered with a 5mm foam layer, onto which a durable technical fabric cover is applied. This material is characterized by its strength and high resistance to abrasion, tearing, and mechanical stress. It is lightweight and relatively rigid, crafted from polyester fibers that absorb moisture lightly. However, thanks to the PVC-coated bottom layer, the fabric is waterproof. The applied soundproofing ensures that the items stored in the pockets do not vibrate during travel. The back of the Moon Organizer is lined with felt-like material, effectively dampening the space between the plywood of the organizer and the vehicle's body.

The Moon Organizer is designed to maximize space in your van. When mounted on the rear doors, it provides access to handy tools. The abundance of pockets, nets, hooks, and straps ensures that everything is always within reach (and in its proper place). A set of organizers allows you to transport over 60 liters of luggage without sacrificing interior space in the vehicle.

The organizers do not have mounting holes, so it will be easy to mount them in any way you want without using the factory holes.

Available colours:



Anthracite



Gray



Blue



Red



Green

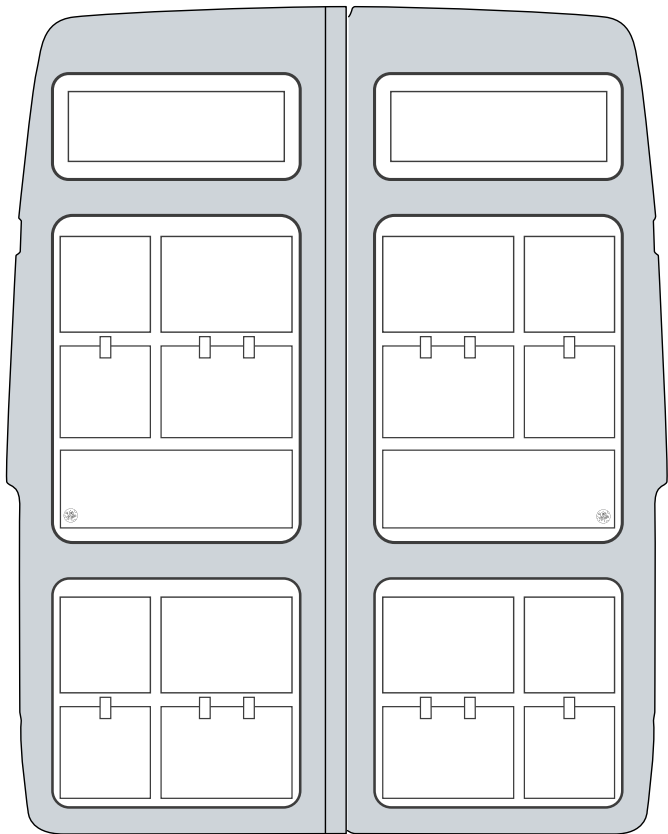
Compatible car models, Moon Organizer:

Mercedes Sprinter 906
Mercedes Sprinter 907
Volkswagen Crafter I
Volkswagen Crafter II
Volkswagen LT < 2006
Man TGE > 2017, H2, H3
RAM ProMaster > 2013
Fiat Ducato version III > 2006
Citroen Jumper version II > 2006
Peugeot Boxer version II > 2006
Renault Master II
Renault Master III
Renault Traffic III
Nissan Interstar
Nissan Interstar II NV400
Opel Movano B (2)
Opel Movano 3
Toyota Proace II
Toyota Proace MAX

Compatible car models, Moon Organizer MAX:

Mercedes Sprinter 906, H3, R/AWD
Mercedes Sprinter 907, H3, R/AWD
Volkswagen Crafter I, R/AWD H3
Volkswagen Crafter II, H2, H3
Man TGE > 2017, H2, H3

Available **versions**

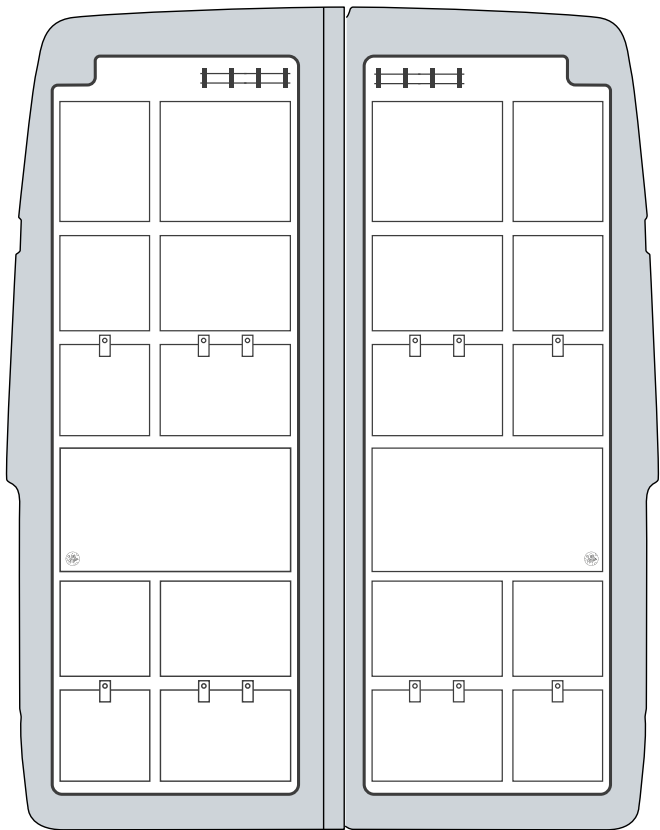


Illustrative drawing

MOON**ORGANIZER**

Depending on the make and model of your vehicle, you can install anywhere from 1 to even 6 Moon Organizers. We have precisely tailored the components to fit perfectly into the recesses found in the rear doors of your van. The products vary in shape, arrangement of elements, and pockets depending on the vehicle.

We approach each shape individually to maximize storage space utilization.



Illustrative drawing

MOON**ORGANIZER** **MAX**

The Moon Organizer MAX will cover the entire door. You can choose the right, left, or both door wings. For transportation, production, and ease of installation reasons, we have divided it into two segments that fit together perfectly.

This solution increases the capacity and covers the entire door of the vehicle.

We have filled the available spaces with eyelets and clips so you can attach even the smallest items to it.

Tools **needed**



Pencil



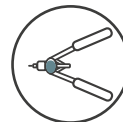
Soldering iron



Drill



Screwdriver



Rivet nut tool

Set of **elements we**



Mounting bracket
or angle bracket.

The kit includes **only** mounting brackets for the Moon Organizers that fit into the central recess of the rear doors of the vehicle. The upper and lower recesses, as well as the Moon Organizer MAX, do not require the use of mounting brackets for installation.

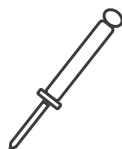


Rivet nut M5



Bolt M5 with crew washer ø5

or



Blind rivet

or*



Screw ø5 *

Important!

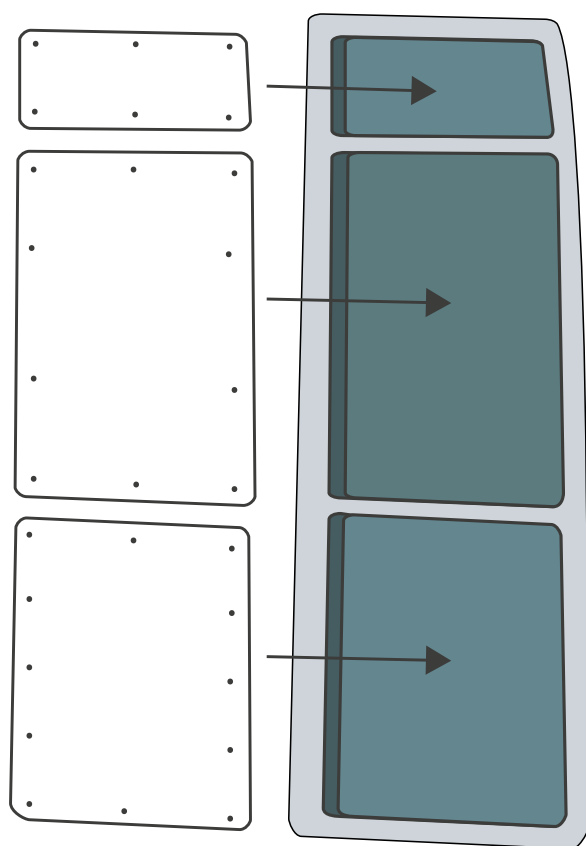
You can replace M5 rivet nuts, M5 screws, and ø 5 washers with sheet metal screws or wood screws. In the case of mounting with sheet metal screws or wood screws, **the manufacturer is not responsible** for the load-bearing capacity of these connections and does not recommend such installation. You will achieve maximum benefits from using the Moon Organizer **ONLY** when you attach the product with M5 rivet nuts, M5 screws, and ø 5 washers or removable rivets.

Prepare your car for the installation

MOON**ORGANIZER**

The method of mounting the Moon Organizer depends on the location where it will be installed:

- I. Mount the Moon Organizer in the upper and lower recesses directly to the vehicle's body – **page 8**
- II. Mount the Moon Organizer in the window recess using mounting brackets – **page 11**
- III. Mount the Moon Organizer MAX directly to the vehicle's body – **page 14**



I. Directly to the vehicle's body
(upper recess)) – **page 8**

II. Using mounting brackets
(window recess) – **page 11**

III. Directly to the vehicle's body
(lower recess) – **page 8**



Watch a Moon Organizer installation video.

I. Assembly in the **upper and lower** recesses.

Step 1

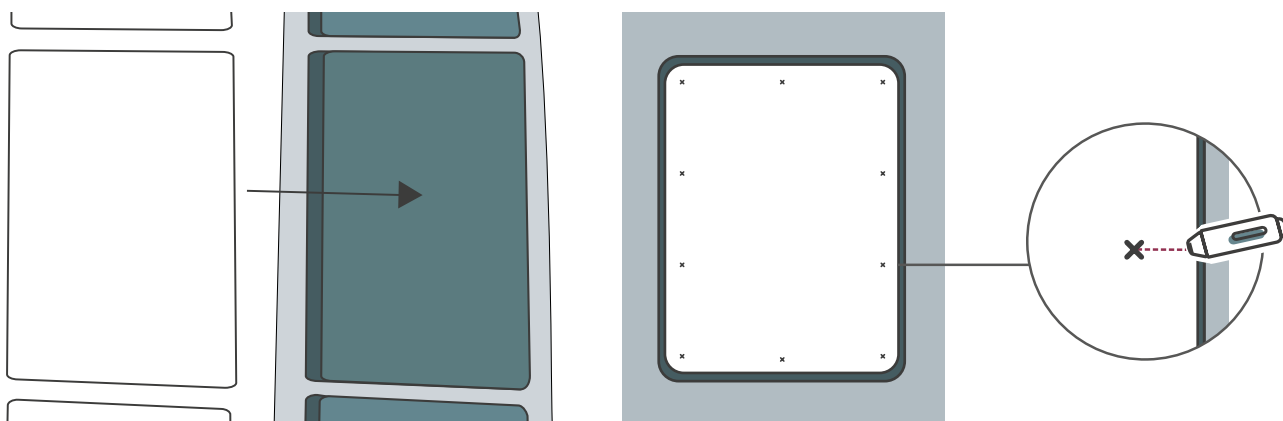


Pencil



Marker

Apply the organizer to the corresponding recess in the car door. Determine the optimal mounting points (we recommend 3 on the short side, 4 on the long side on the lower element and 6 mounting points on the upper element). Mark the mounting locations with a marker on the Organizer.



Step 2

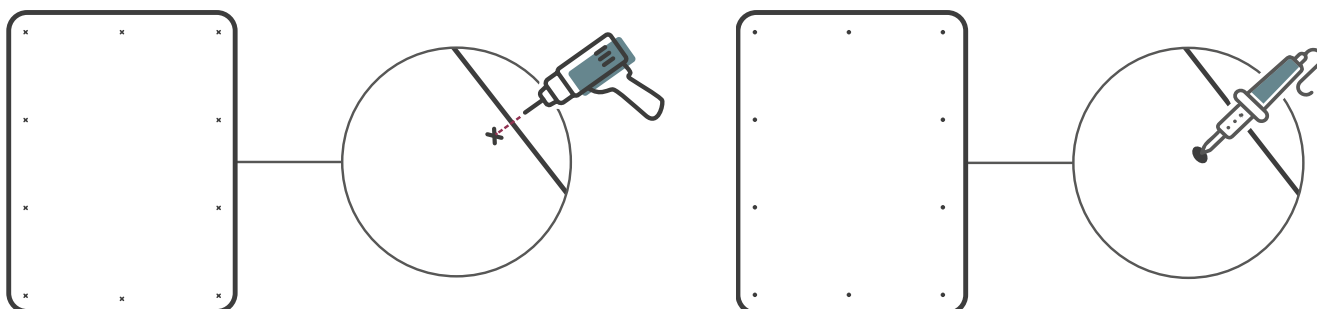


Screwdriver



Soldering iron

In the designated places on the Organizer, make holes by drilling all the way through the Organizer. You can trim the protruding threads with a heated soldering iron tip or a lighter.

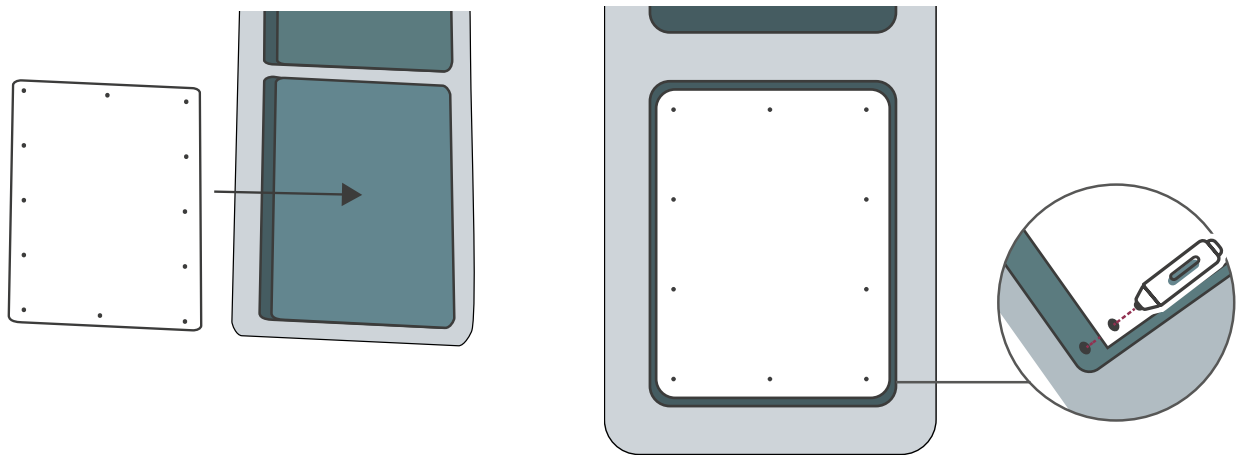


Step 3



Pencil

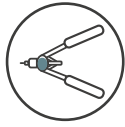
Apply the Moon Organizer to the corresponding recess in the car door. Through the holes located around the perimeter of the Moon Organizer, mark the drill points.



Step 4



Screwdriver

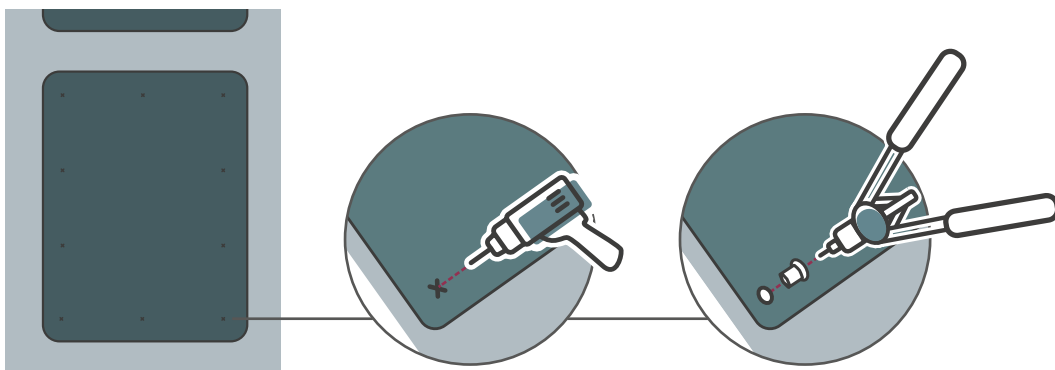


Rivet nut tool



Rivet nut M5

Drill holes in the car door at the previously marked locations.
Tighten the rivet nuts in the drilled holes.



Step 5

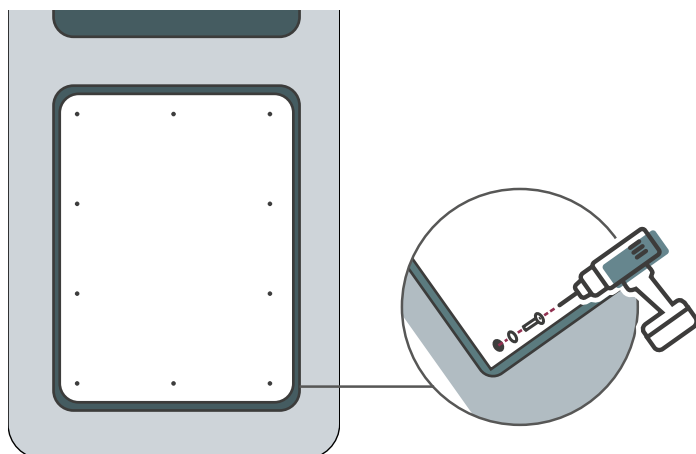


Screwdriver



M5 screw with a pad

Attach the Moon Organizer with screws and washers. Done!



II. Assembly in the **window recess**.

Step 1

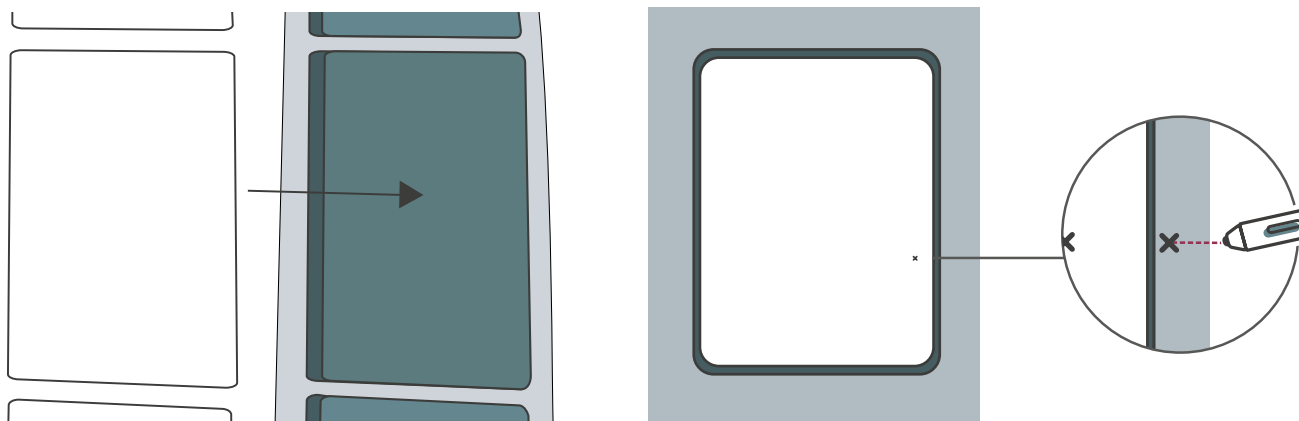


Pencil



Marker

Apply the organizer to the corresponding recess in the car door. Determine the optimal mounting locations (we recommend 3 on the short and 4 on the long sides). Mark the mounting locations on the Organizer with a marker, and on the body with a pencil.



Step 2

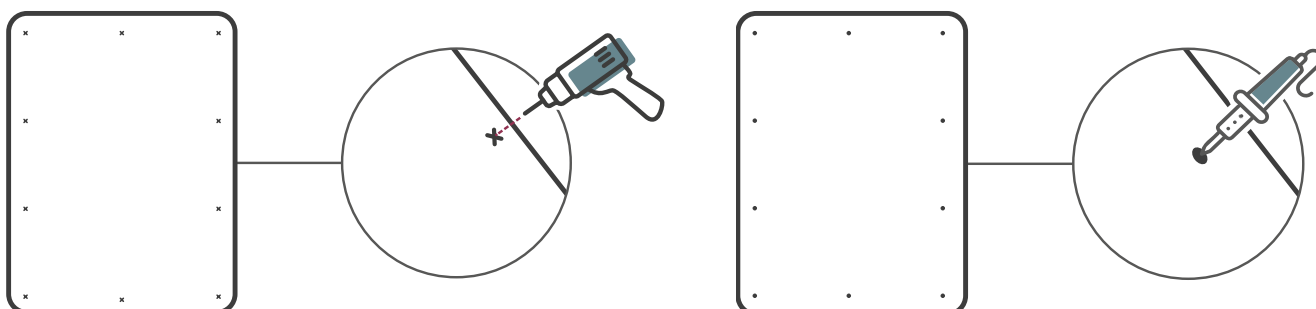


Screwdriver



Soldering iron

In the places designated on the Organizer, make holes by drilling all the way through the organizer. You can smelt the protruding threads with a heated soldering iron tip or a lighter.



Step 3



Pencil

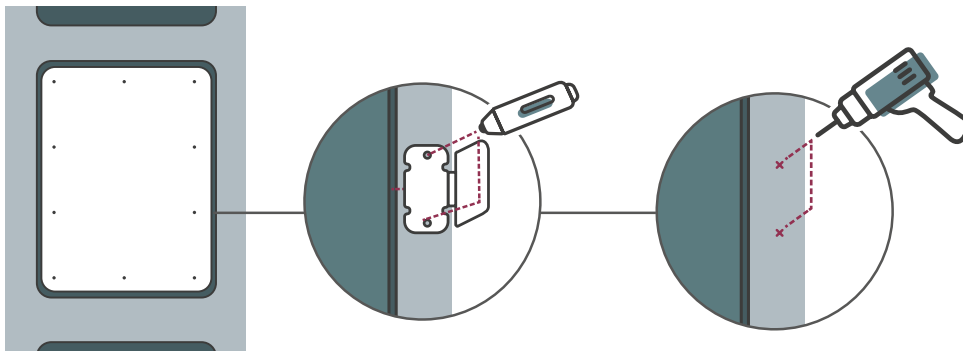


Drill

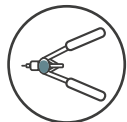


Mounting bracket
or angle bracket

Place the mounting bracket or angle bracket in the center of the previously marked points. In the holes of the mounting bracket, mark the drilling points. Then, drill the holes.



Step 4



Rivet nut tool



Screwdriver

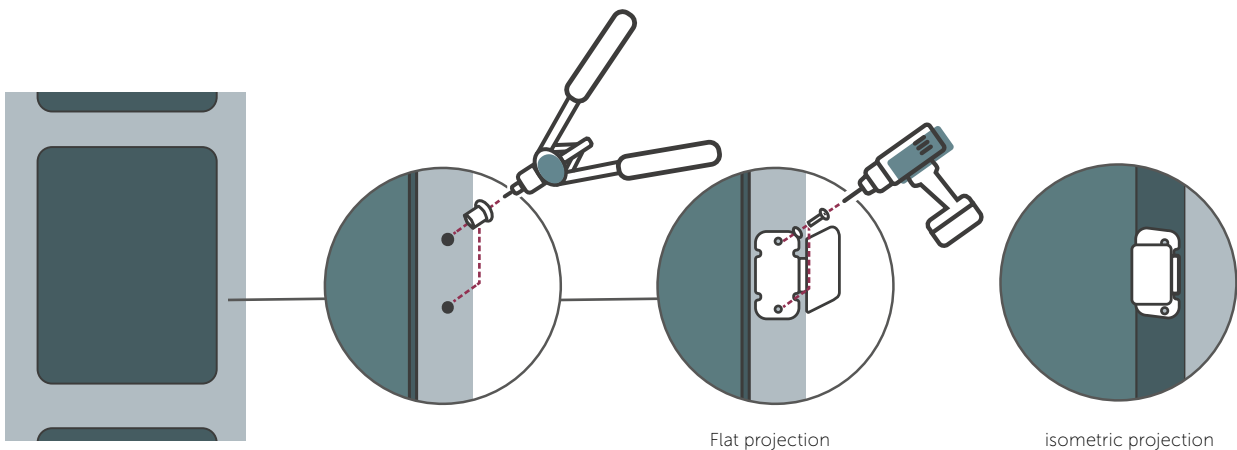


Rivet nut M5



M5 screw and a pad

Tighten the rivet nuts into the holes, then attach the mounting brackets using screws and washers. You can also secure the mounting brackets with removable rivets.



Step 5

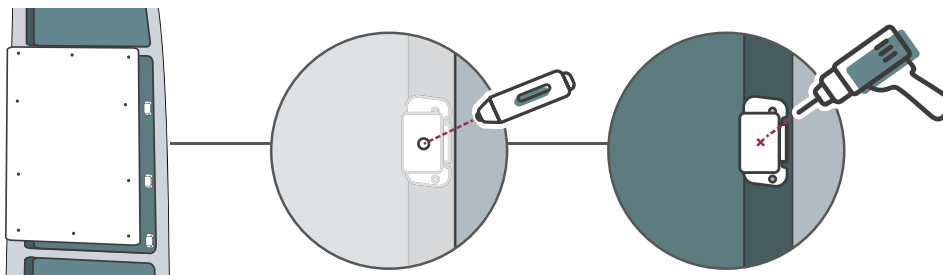


Pencil



Drill

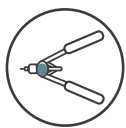
Place the Moon Organizer in the window recess of the car door. Through the holes located around the perimeter of the Moon Organizer, mark the drilling points on the mounting brackets. Then, drill the holes.



Step 6



Screwdriver

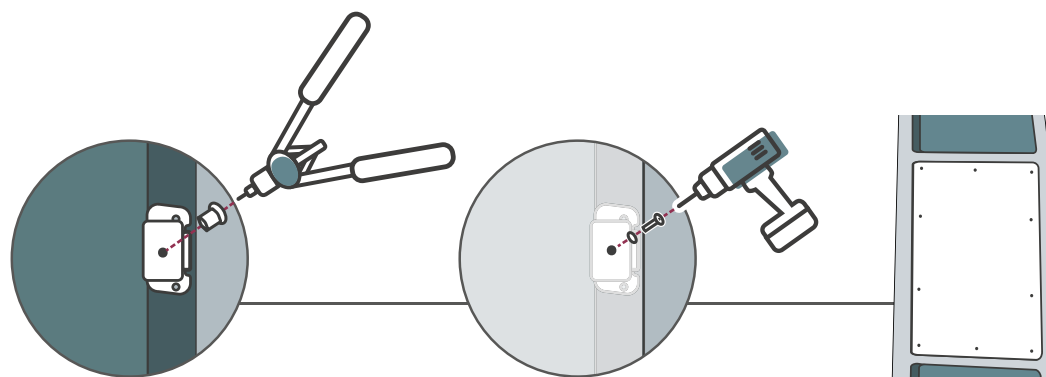


Rivet nut tool



M5 screw with a pad

Tighten the rivet nuts in the mounting brackets. Then, attach the Moon Organizer using screws and washers. You're done!



III. Installation of MOON**ORGANIZER** MAX

Step 1

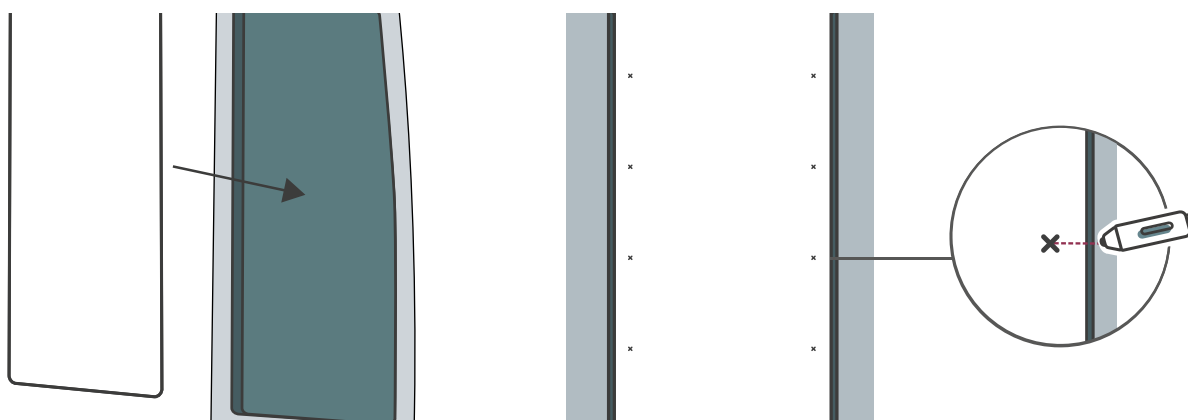


Pencil



Marker

Apply the organizer to the corresponding recess in the car door. Determine the optimal mounting locations. Mark the mounting locations with a marker on the Organizer.



Step 2

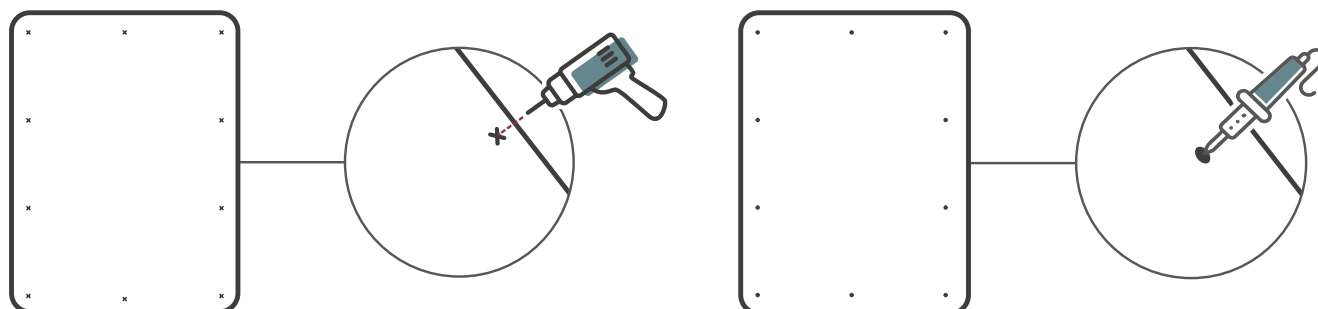


Screwdriver



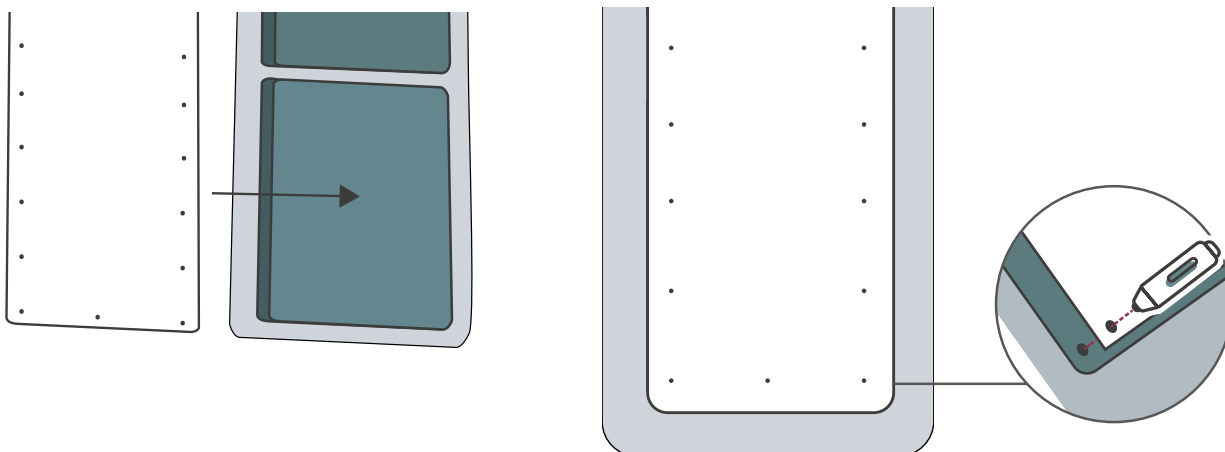
Soldering iron

In the places designated on the Organizer, make holes by drilling all the way through the organizer. You can smelt the protruding threads with a heated soldering iron tip or a lighter.

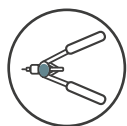


Step 3

Place the Moon Organizer Max in the corresponding recess in the car door. Through the holes located around the perimeter of the Moon Organizer Max, mark the drilling points on the vehicle's body. Start from the lower part of the Moon Organizer Max.



Step 4



Rivet nut tool

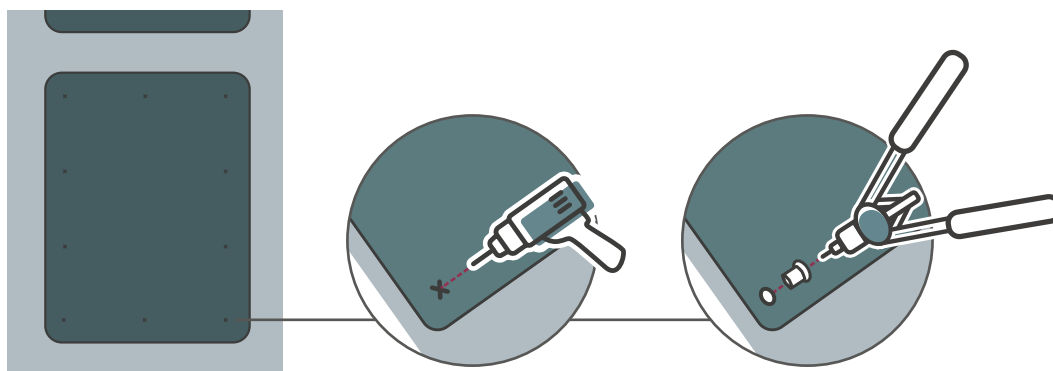


Drill




Rivet nut M5


Drill holes in the car door at the previously marked locations. Tighten the rivet nuts in the drilled holes.



Step 5

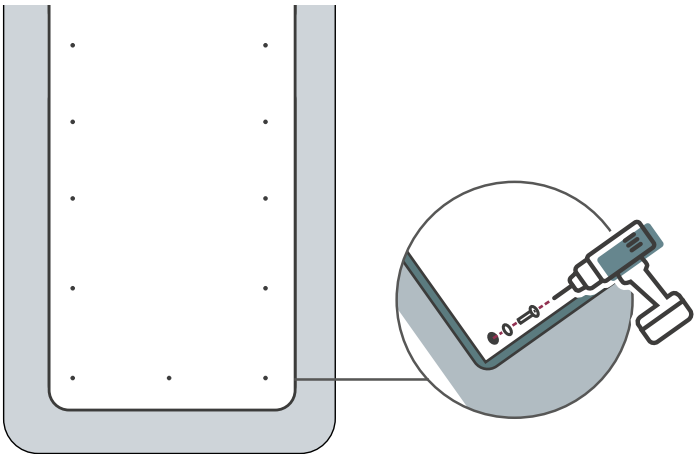


Screwdriver



M5 screw with a pad

Attach the Moon Organizer Max with screws and washers. Done!



Information **on use**



Cleaning

Handwash. Rinse the soiled area thoroughly with clean water and wipe it with a sponge gently using a mild detergent.

Do not use bleach, iron or heat drying. The product is not machine washable. Before cleaning, remove all elements from the inside of the Moon Organizer along with the shelf.

Metal parts should be dry cleaned.



Composition

poliester 100%, coating PVC-FLAT, aluminium, polypropylene plate



Transport and storage

The products are packed in cardboard outer packaging.

During transport, they should be placed horizontally or vertically.

Must be transported in the original packaging.



Package disposal

The packaging is made of recyclable cardboard, so it should not be thrown away, but stored in a landfill in waste paper bins or special containers for cardboard packaging.



Safety precautions

Please make sure you have read and understood the instructions before using the Moon Organizer.

After installation, it is recommended to check the mounting of the Moon Organizer by pulling the entire structure firmly.

Do not leave the Moon Organizer in direct sunlight - it may cause fading of the material. This does not change the mechanical properties of the material.

Do not use open fire near the Moon Organizer.

Protect against moisture.

Do not load the Moon Organizer beyond the recommended maximum weight.

Do not use any sharp objects such as knives, screwdrivers, etc. to remove the outer packaging.



www.vandermoon.com



Contact

tel. +48 18 442 33 69
shop@vandermoon.com

Van der Moon® is a registered trademark of the Vitberg Sikora Jacek. ©
Vitberg Sikora Jacek – all rights reserved.
Made in Poland.
